


telpho10 Installation VMWare

New Virtual Machine Wizard



Welcome to the New Virtual Machine Wizard

This wizard will guide you through the steps of creating a new virtual machine.

New Virtual Machine Wizard

Select the Appropriate Configuration

How would you prefer to configure your new virtual machine?

Virtual machine configuration

Typical
 Create a new virtual machine with the most common devices and configuration options.

Custom
 Choose this option if you need to create a virtual machine with additional devices or specific configuration options.

New Virtual Machine Wizard

Select a Guest Operating System

Which operating system will be installed on this virtual machine?

Guest operating system

Microsoft Windows

Linux

Novell NetWare

Sun Solaris

Other

Version

Other Linux

New Virtual Machine Wizard

Name the Virtual Machine

What name would you like to use for this virtual machine?

Virtual machine name

telpho10

Location

C:\Virtual Machines\telpho10

New Virtual Machine Wizard

Set Access Rights

To whom would you like to allow access?

Access rights

Would you like to have private access to this virtual machine?

Make this virtual machine private

If you choose to make this virtual machine private, only your user account will have access to it.

To allow access to other users, uncheck the item above. Access to the virtual machine will be determined by its file system permissions.

New Virtual Machine Wizard

Startup / Shutdown Options

Set the options for starting up/shutting down this virtual machine.

Virtual machine account

Run this virtual machine as:

User that powers on the virtual machine

Local system account

This user:

Password:

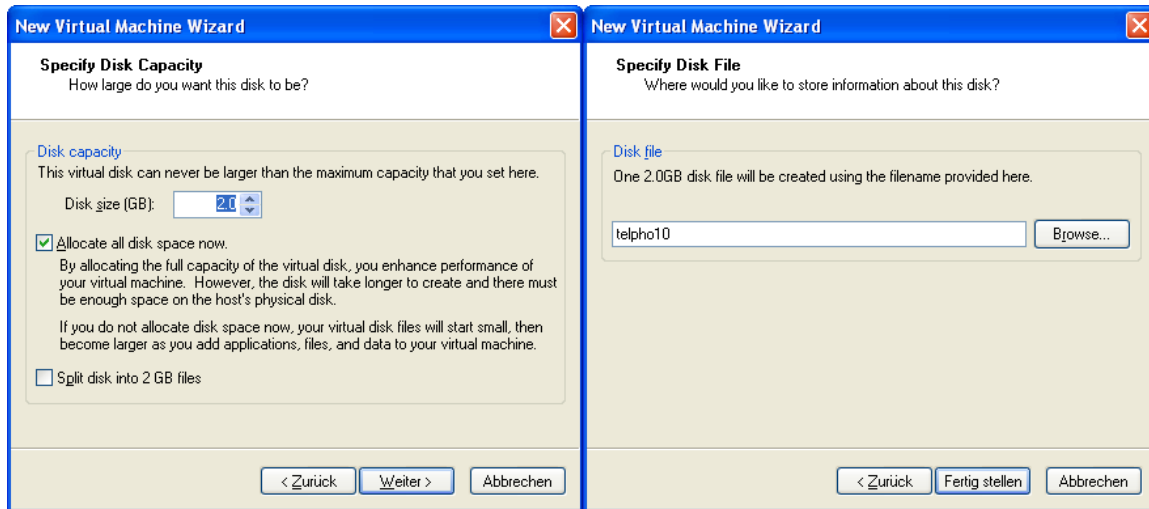
Confirm:

Startup / Shutdown options

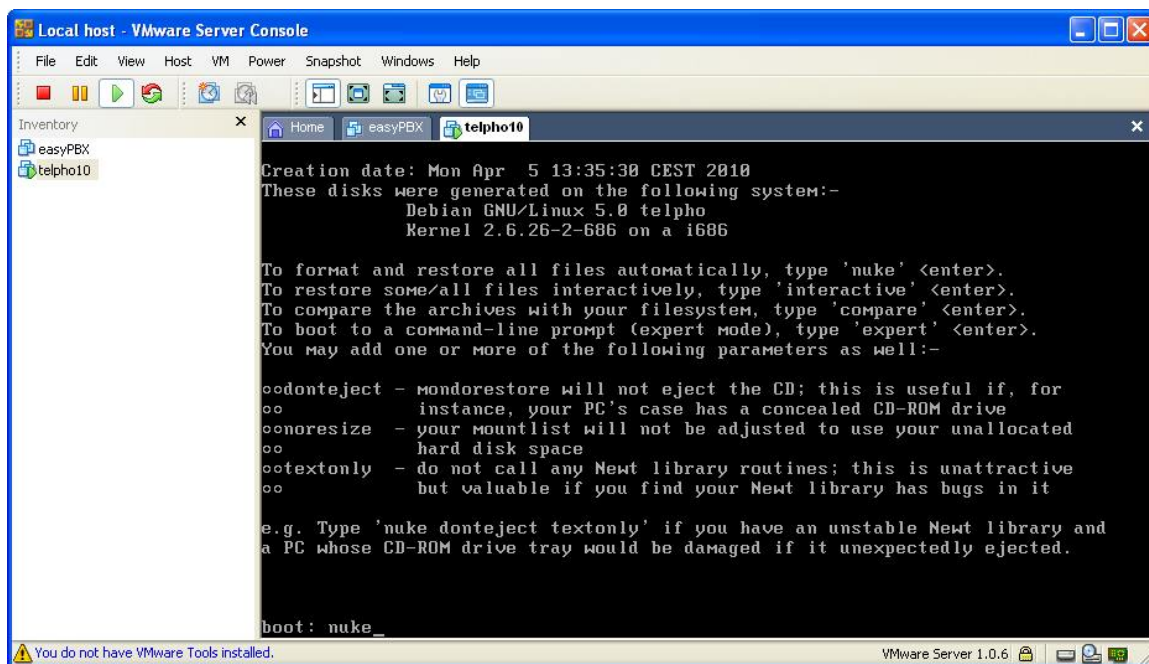
These options are not available for the selected account type.

On host startup: Don't power on virtual machine

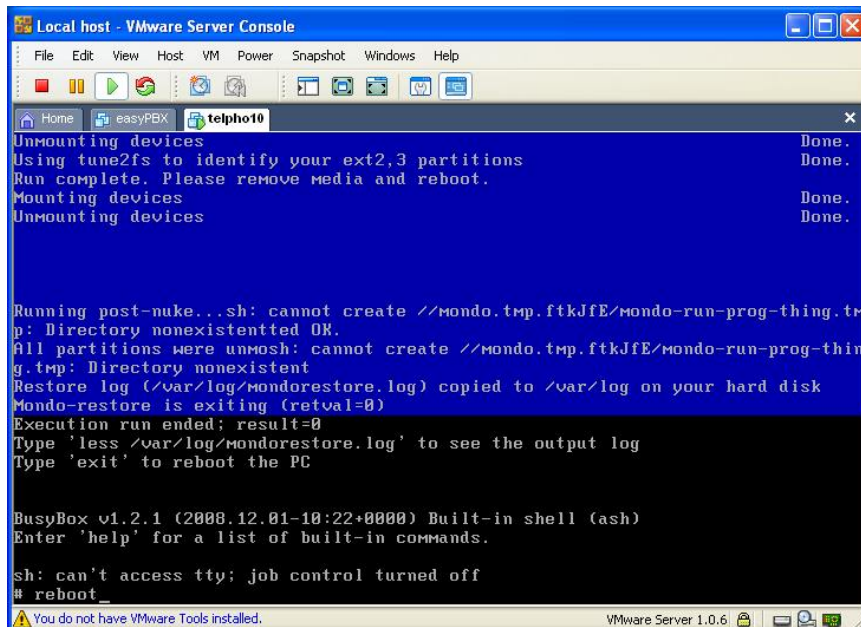
On host shutdown: Power off virtual machine



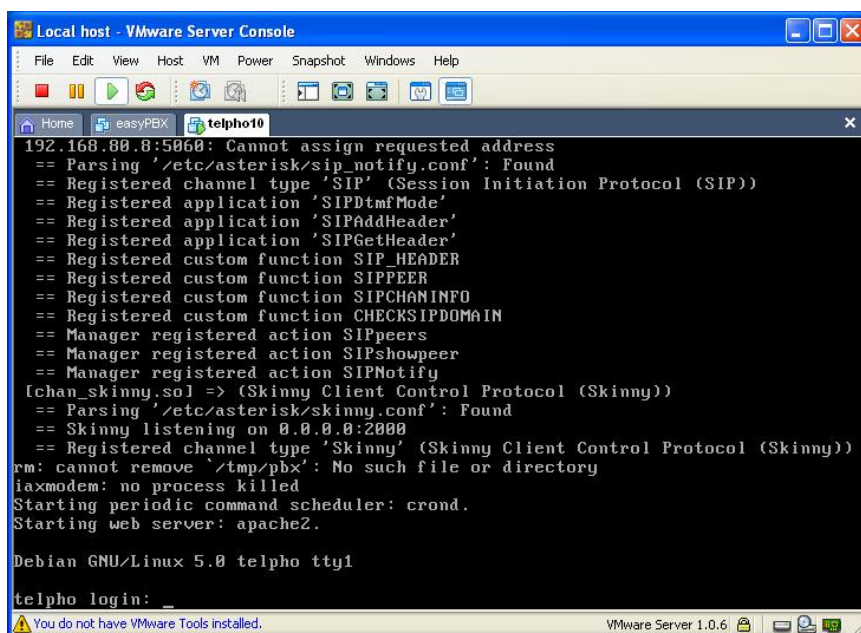
CD in Laufwerk einlegen und virtuelle Maschine starten.



Befehl „nuke“ eingeben und ENTER



Nach erfolgreichem Restore CD aus Laufwerk nehmen. „reboot“ eingeben und ENTER.



Login: root
Passwort: telpho

Weitere Informationen finden Sie auf <http://www.telpho-pbx.de/telpho-wiki/index.php/Hauptseite>